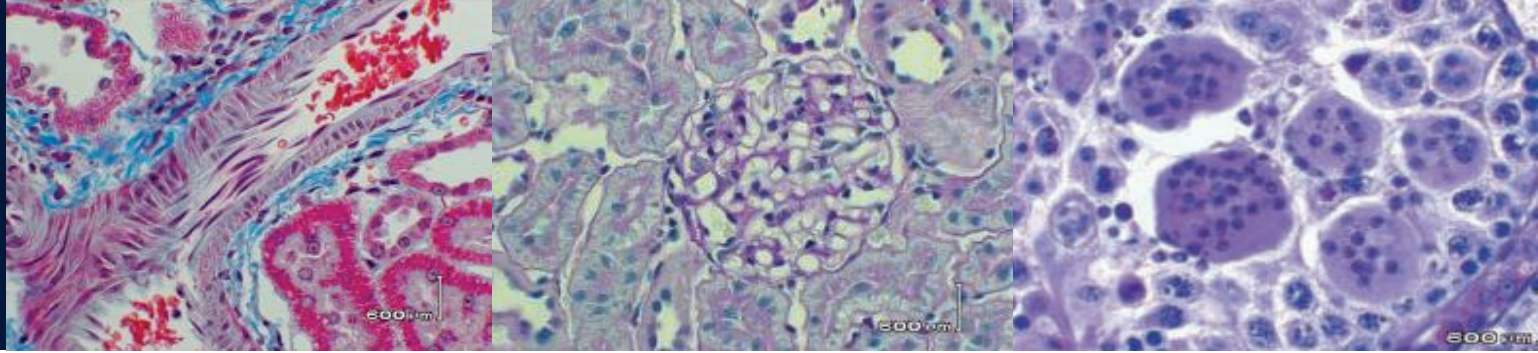
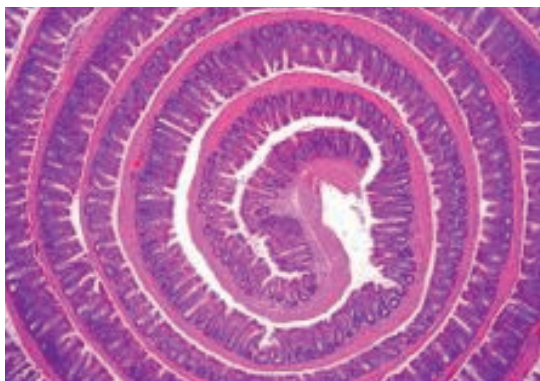


Research Histology Core



About Us

The Research Histology Core (RHC) mission is to provide services using our expertise in processing both human and animal tissues for pre-clinical research. Our goal is to take time to learn about each of our clients objectives and tailor our work to their needs. We strive to achieve excellent quality on our work, in our customer service and customer satisfaction.



Our Services

- Tissue processing and embedding
- Paraffin and cryosection
- Routine H&E
- Special Stains including:
 - Gomori Trichrome
 - Masson's Trichrome
 - Safranin O
 - Oil Red O (cryosection)
 - Periodic Acid Schiff
 - Elastin Stain
 - Toluidine Blue Giemsa

Instrumentation

- Thermo Shandon Tissue Processor for formalin fixed tissue
- Tissue Tek VIP Tissue Processor for Bouin fixed tissue
- Thermo Shandon Embedding Center for paraffin blocks
- Leica RM2255 automated microtomes for sectioning paraffin blocks to slides
- Varistain Gemini – for automated H&E
- Cryostar NX50 – for cryosection



The RHC has expertise in processing **human and animal tissues**



**Enhancing Research,
Rigor and Reliability**

Our Team

Sheri VanHoose
A.S., MLT(NCA) -
Director



Lisa Vohwinkel -
Lab Specialist II



Contact

Dr. Sijie Hao - pfa2xb@virginia.edu
Natalia Dworak - nmd4e@virginia.edu

Phone: 434-924-9205

RHC Website:
med.virginia.edu/research-histology-core/

Request services on:
uva.corefacilities.org/account/login

UVA Research Histology Core
MR4 building / Room 1035
409 Lane Road
Charlottesville, VA 22908

