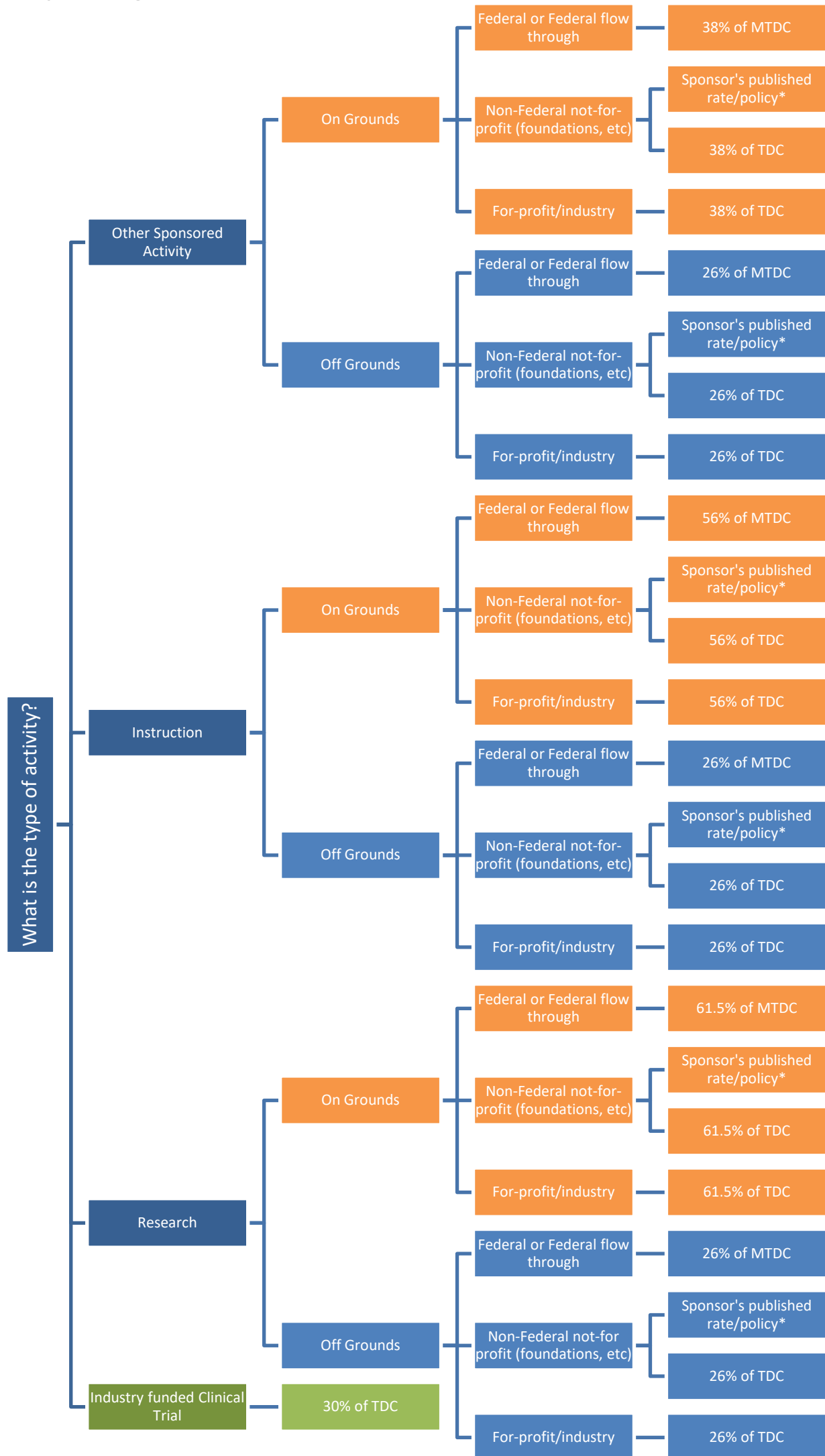


# University of Virginia F&A Rate Guide



## NOTES

1. All above rates are based on the current DHHS-negotiated F&A Rate Agreement or the [industry-funded clinical trial rate policy](#).
2. On/Off Grounds determination is based on the preponderance of the effort for the project.

\*Please consult your school Dean's office

# University of Virginia F&A Rate Guide

## DEFINITIONS

**Federal Flow Through** Funds awarded to the University of Virginia from non-federal entities that are funded, in total or in part, by federal agencies.

**Instruction** The teaching and training activities of an institution.

**MTDC (Modified Total Direct Cost)** The federally-mandated base to which F&A (indirect cost) rates are applied that excludes equipment, capital expenditures, charges for patient care, rental costs, tuition remission, scholarships and fellowships, participant support costs, and the portion of each subaward in excess of \$25,000. [applicable only to federal or federal flow-through projects]

**Off Grounds** All facilities not owned by the University of Virginia and to which rent is directly allocated to the project(s).

**On Grounds** All facilities owned by the University of Virginia and to which rent is not directly allocated to the project(s).

**Other Sponsored Activity** Programs and projects which involve the performance of work other than instruction and organized research. Examples of such programs and projects are clinical trials, health service projects, and community service programs.

**Research** All of the research and development activities of an institution.

**Applied Research** Research conducted to gain the knowledge or understanding to meet a specific, recognized need.

**Basic Research** Research undertaken primarily to acquire new knowledge without any particular application or use required.

**Clinical Research** Research conducted with human subjects (or on material of human origin such as tissues, specimens, and cognitive phenomena) for which an investigator directly interacts with human subjects.

**Clinical Trial** A research study in which human subjects are prospectively assigned to one or more interventions (which may include placebo or other control) to evaluate the effects of those interventions on health-related biomedical or behavioral outcomes.

**Computational** Research that has a need for computational infrastructure.

**Development** The systematic use of the knowledge or understanding gained from research directed toward the production of useful materials, devices, systems, or methods, including the design and development of prototypes and processes.

**TDC (Total Direct Cost)** The base to which F&A (indirect cost) rates are applied without any exclusions. [applicable to any non-federal project for which the sponsor has no published F&A rate policy]